

Wed

RECEIVED OCT 27 1965

*James
file
copy*

Director Graves

October 25, 1965

Jim Cassin

Illinois Information Booth at Disneyland Show

Jack Sayres, who heads exhibitors' relations at Disneyland, called today to call a showdown to our state participation at Disneyland.

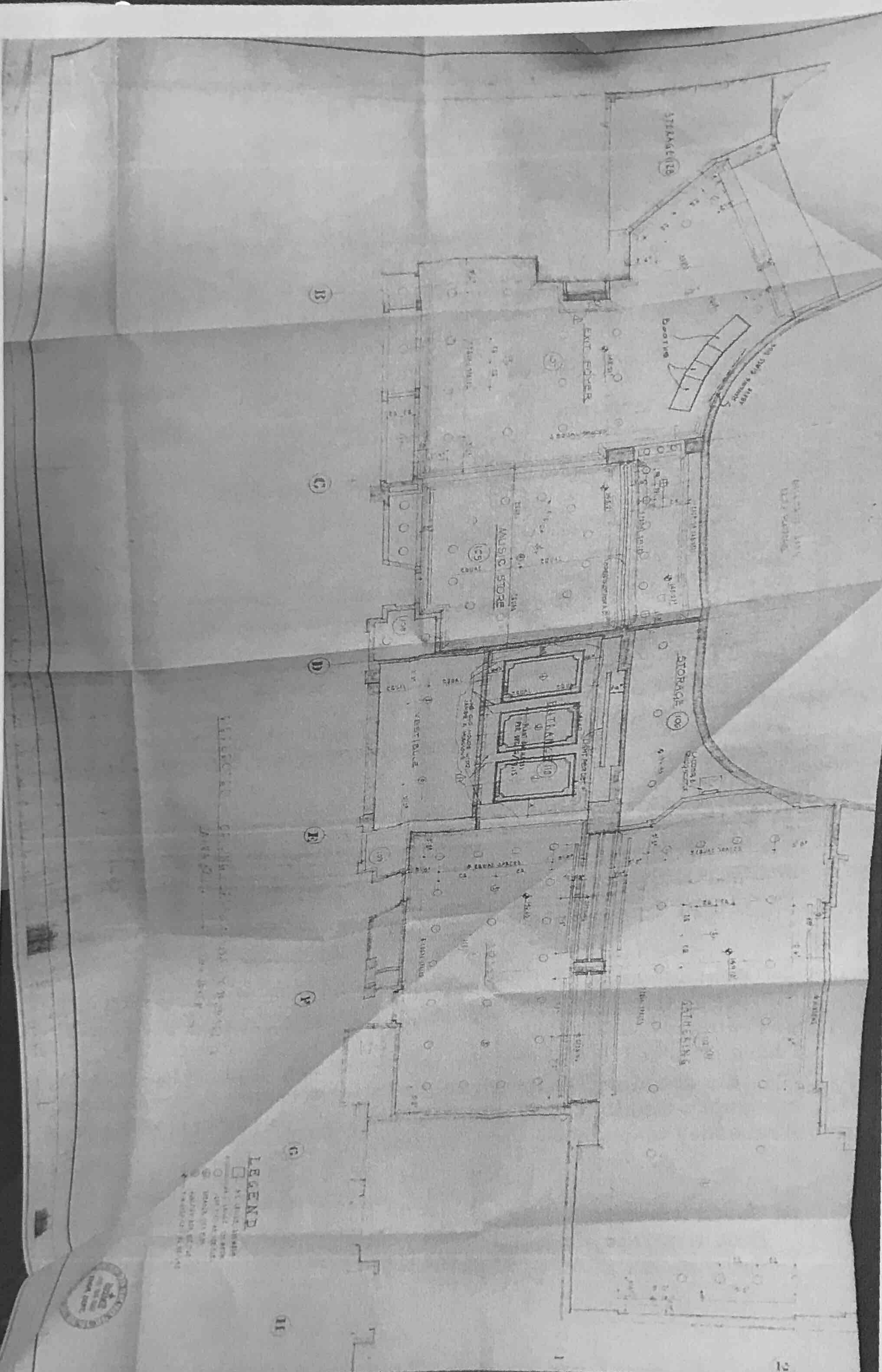
The term of our deal with them is to pay \$16,600 for a year-round staff payroll at the Booth. The original breakdown is: \$10,000 - World's Fair Commission; \$6,600 - Tourism. As you know, the Attorney General ruled that the World's Fair Commission could not bear costs other than at the World's Fair or in direct connection with it. Repeated efforts to change this ruling have failed.

As you also know, Ralph Newman has been considering the payroll costs at Disneyland as an appropriate part of the advance work for the Sesquicentennial Celebration. He has told me informally and unofficially he will be willing to support the idea of paying the \$10,000 out of the Sesquicentennial funds once those funds are released on or about January 1, 1966.

The only alternative to having Tourism pay \$6,600 and Sesquicentennial \$10,000 is the closing of the Illinois Information Booth at Disneyland.

I have promised Sayres that the matter would be resolved immediately. They are out of pocket for payroll costs for more than four months and are quite naturally upset. Dick Newman will be checking with you on Wednesday to determine your decision.

cc Chuck Schrader
Dick Newman
Ralph Newman



LEGEND

- AS QUANT. SYMBOL
- AS QUANT. SYMBOL
- AS QUANT. SYMBOL
- AS QUANT. SYMBOL
- AS QUANT. SYMBOL

WED ENTERPRISES, INC.
 Anaheim, California
 Phone (714) 241-8000

PROJECT NO. **A-1-G**

UNIT NAME **UNIT 100**

PROJECT DESIGNED FOR
DISNEYLAND
ANAHEIM, CALIFORNIA

SHEET TITLE
FLOOR PLAN

NOTICE
 The user in this document acknowledges proprietary rights of
WED ENTERPRISES, INC. - ANAHEIM, CALIFORNIA
 Any party receiving this document shall not in possession and shall not be permitted to reproduce or disclose in whole or in part, nor to make any copy, without the consent of WED Enterprises, Inc.

NET DIRECTOR **VICTOR KRISHNA**

SCALE **1/2" = 1'-0"**

DATE **NOV 1964**

DRAWN BY **WED**

APPROVED **WED**

APPROVED **WED**

NO.	TO WHOM ISSUED
1	FOR CONSTRUCTION
2	FOR ESTIMATES
3	FOR ARCHITECT
4	FOR CONTRACTOR
5	FOR OTHER